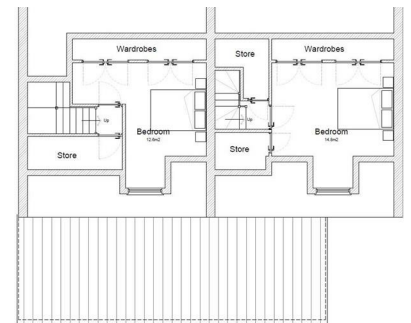
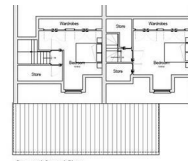
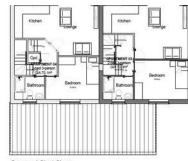
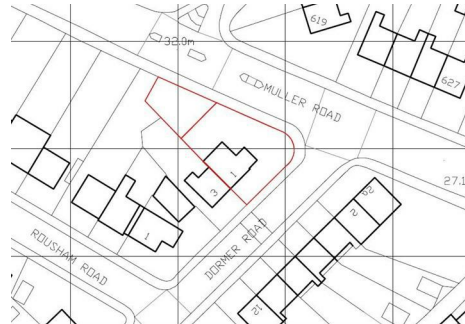




0117 973 6565  
 www.hollismorgan.co.uk  
 post@hollismorgan.co.uk

hollis  
 morgan  
 auction



## House and 2 X Plot, 1 Dormer Road, Eastville, Bristol, BS5 6XH

**Auction Guide Price £325,000 +++**

Hollis Morgan NOVEMBER AUCTION - A Freehold DEVELOPMENT OPPORTUNITY with PLANNING GRANTED to extend the existing property to create 4 X APARTMENTS with a GDV of £800k \*\*\* BONUS PLOT TO REAR NOW INCLUDED \*\*\*

# House and 2 X Plot, 1 Dormer Road, Eastville, Bristol, BS5 6XH

## FOR SALE BY AUCTION

\*\*\* SOLD PRIOR TO AUCTION \*\*\*

GUIDE £300,000 +++  
SOLD @ £325,000

LOT NUMBER 12

Wednesday 28th November 2018

All Saints Church Pembroke Road, Clifton, Bristol BS8 2HY

Legal packs will be available for inspection from 18:00.  
The sale will begin promptly at 19:00

## VIEWING

By appointment with Hollis Morgan.

## ONLINE LEGAL PACKS

Digital Copies of the Online legal pack can be downloaded Free of Charge.

Please visit the Hollis Morgan Website and select the chosen lot from our Current Auction List.

Follow the RED link to "Download Legal Packs" For the first visit you will be required to register simply with your email and a password.

Having set up your account you can download legal packs or if they are not yet available they will automatically be sent to you when we receive them.

You will be automatically updated by email if any new information is added.

There will be a note added to the list to confirm AUCTION PACK NOW COMPLETE when no further information is due to be added.

\*\*\* STAY UPDATED \*\*\* By registering for the legal pack we can ensure you are kept updated on any changes to this Lot in the build up to the sale.

## SOLICITORS

Julian Chapman  
Julian@devlaw.co.uk  
Devereux & Co  
T : (0117) 941 9056  
F : (0117) 959 3355

## THE PROPERTY

A Freehold semi detached family home ( 1178 Sq Ft ) arranged over two floors occupying a prominent corner plot with enclosed side and rear gardens plus garage and parking.

Sold with vacant possession.

## PLOT TO REAR

An additional parcel of land to the rear is now included with scope for a 2 bedroom house

Subject to consents

Refer to proposed scheme in legal pack

## LOCATION

Dormer Road is located within the popular residential suburb of Eastville. Local amenities and services are all within walking distance including Fairfield High School. The M32 Motorway network is approximately one mile away whilst Bristol City Centre is three miles away.

## THE OPPORTUNITY

### DEVELOPMENT OPPORTUNITY

Planning is granted to extend the original property and create four large self contained apartments.

APARTMENT 1 ( 538 Sq FT )

Ground Floor, 1 bedroom, Open Plan Living Space, Bathroom.

APARTMENT 2 ( 656 Sq FT )

Ground Floor, 2 bedroom, Open Plan Living Space, Bathroom, Garden.

APARTMENT 3 ( 753 Sq FT )

First and Second Floor maisonette, 2 bedroom, Open Plan Living Space, Bathroom.

APARTMENT 3 ( 753 Sq FT )

First and Second Floor maisonette, 2 bedroom, Open Plan Living Space, Bathroom.

SITE GDV - £800,000

## RENTAL APPRAISAL

What rent can we achieve for you?

The Bristol Residential Letting Co. are confident this property would make a good rental investment. Josh Box of The Bristol Residential Letting Co suggests a rent of;

Ground floor 1 bedroom apartment - £700pcm - £750pcm

Ground floor 2 bedroom apartment - £825pcm - £875pcm

First and second floor 2 bedroom maisonettes - £850pcm - £900pcm

If you would like to discuss more detail on the potential for rental, you can call me (0117 370 8818) or email (josh@bristolreslet.com) for a no obligation discussion. Alternatively why not drop into my Office (222 North Street, Southville, BS3 1JD) where I am always happy to advise investors on maximising their investment.

## PLANNING GRANTED

Decision : GRANTED subject to condition(s)

# House and 2 X Plot, 1 Dormer Road, Eastville, Bristol, BS5 6XH

Application no: 18/03239/F  
Type of application: Full Planning  
Site address: 1 Dormer Road, Bristol, BS5 6XH.  
Description of development: Conversion of existing dwelling to 2no. self-contained flats and the erection of a two-storey side extension comprising 2no. self-contained flats (to result in 3 x 2b4p flats and 1 x 2b3p flat in total).  
Applicant: Anford Homes Ltd  
Agent: Stokes Morgan Planning Ltd  
Committee/delegation date: 14.09.18  
Date of Notice: 14.09.18

## PRE AUCTION OFFERS

Some properties may be available to buy prior to the auction.

Pre auction offers can be only submitted by completing the OFFER FORM which can be downloaded with the online legal pack - please email the COMPLETED form to – [olly@hollismorgan.co.uk](mailto:olly@hollismorgan.co.uk).

Please note offers will not be considered until you have VIEWED the property and the COMPLETE LEGAL PACK has been released.

You will be emailed a note to confirm the AUCTION PACK NOW COMPLETE and then offers can be submitted.

In the event of an offer being accepted the property will only be removed from the auction and viewings stopped once contracts have successfully EXCHANGED subject to the standard auction terms and payment of the buyer's premium ( £1,200 ) to Hollis Morgan. Contracts can be signed either via the solicitors or at the Hollis Morgan offices subject to appointment.

## COMPLETION DATE

Due to Christmas completion is set for 20th December.

## GUIDE PRICE

An indication of the seller's current minimum acceptable price at auction. The guide price or range of guide prices is given to assist consumers in deciding whether or not to pursue a purchase. It is usual, but not always the case, that a provisional reserve range is agreed between the seller and the auctioneer at the start of marketing. As the reserve is not fixed at this stage and can be adjusted by the seller at any time up to the day of the auction in the light of interest shown during the marketing period, a guide price is issued. This guide price can be shown in the form of a minimum and maximum price range within which an acceptable sale price (reserve) would fall, or as a single price figure within 10% of which the minimum acceptable price (reserve) would fall. A guide price is different to a reserve price (see separate definition). Both the guide price and the reserve price can be subject to change up to and including the day of the auction.

## RESERVE PRICE

The seller's minimum acceptable price at auction and the figure below which the auctioneer cannot sell. The reserve price is not disclosed and remains confidential between the seller and the auctioneer. Both the guide price and the reserve price can be subject to change up to and including the day of the auction.

## BUYER'S PREMIUM

Please be aware all purchasers are subject to a £1000 + VAT (£1,200 inc VAT) buyer's premium which is ALWAYS payable upon exchange of contracts whether the sale is concluded before, during or after the auction date.

## BIDDING AT THE AUCTION

This property is for sale by public auction and if you intend to bid please bring the following:

- Proof of identity (valid passport or photo driving licence).
- Proof of address (bank statement, recent utility bill, council tax bill or tenancy agreement).
- 10% deposit payment.
- Buyers premium payment.
- Details of your solicitor.

## EPC

For full details of the EPC please refer to the online legal pack.

## PAYING THE DEPOSIT & BUYERS PREMIUM

We can only accept the following at the auction:

- Personal or Company Cheque
- Bankers Draft
- Debit Card ( NOT CREDIT CARD )

## AUCTION FINANCE

Some properties may require specialist auction finance- please contact Hollis Morgan for access to expert advice and "whole of market" rates.

## SURVEYS AND VALUATIONS

If you would like to arrange a survey or mortgage valuation of this Lot BEFORE the auction please instruct your appointed surveyor to contact Hollis Morgan and we will arrange access for them to inspect the property. Please note that buyers CANNOT attend the surveys and the surveyors are responsible for collecting and returning keys to the Hollis Morgan offices in Clifton.

## TELEPHONE AND PROXY BIDDING

If you cannot attend the auction (although we strongly advise you do) you can make a TELEPHONE or PROXY BID. This authorises the auctioneer to bid on your behalf up to a pre-set limit. Forms and relevant conditions are available to download with the online legal pack. A completed form, ID and two cheques (one for the 10%

deposit and one for the Buyer's Administration Fee of £1,200) are required by the Auction Department at least two full working days before the auction.

## **AUCTION BUYERS GUIDE VIDEO**

We have short video guides for both buying and selling by Public Auction on the Hollis Morgan Website. If you have any further questions regarding the process please don't hesitate to contact Auction HQ.

## **CHARITY OF THE YEAR**

Hollis Morgan are supporting Bristol charity based Off the Record! as our 2018 charity of the year with 5% of each buyers premium donated to help provide free and confidential mental health support and information to young people aged 11-25 in Bristol - [www.otrbristol.org.uk](http://www.otrbristol.org.uk) In 2017 we were delighted to be involved in raising £30,000 over 3 events for the "Life for a cure" Bristol based meningitis charity - [www.ryanbresnahan.org](http://www.ryanbresnahan.org) Visit the Charity page of our Website for further details - <https://www.hollismorgan.co.uk/charity/>

## **TESTIMONIALS**

We are very proud of what our past clients have say about us - please visit the Hollis Morgan website to read their testimonials.

## **WHY HOLLIS MORGAN?**

Hollis Morgan regularly hold the largest property auctions across Bristol and the West Country from our iconic Sale Room in Clifton, since we formed in 2010 we have sold the most £££'s of land and property by Public Auction in the region - EVERY YEAR!

Between 2010 and 2017 we have held 45 auctions, offering 1135 lots and raising over £225m for clients across the region

Did you know....Hollis Morgan sold more £££'s of land and property by auction than all the other Bristol Auctioneers combined in 2017 with over £49m of successful sales!